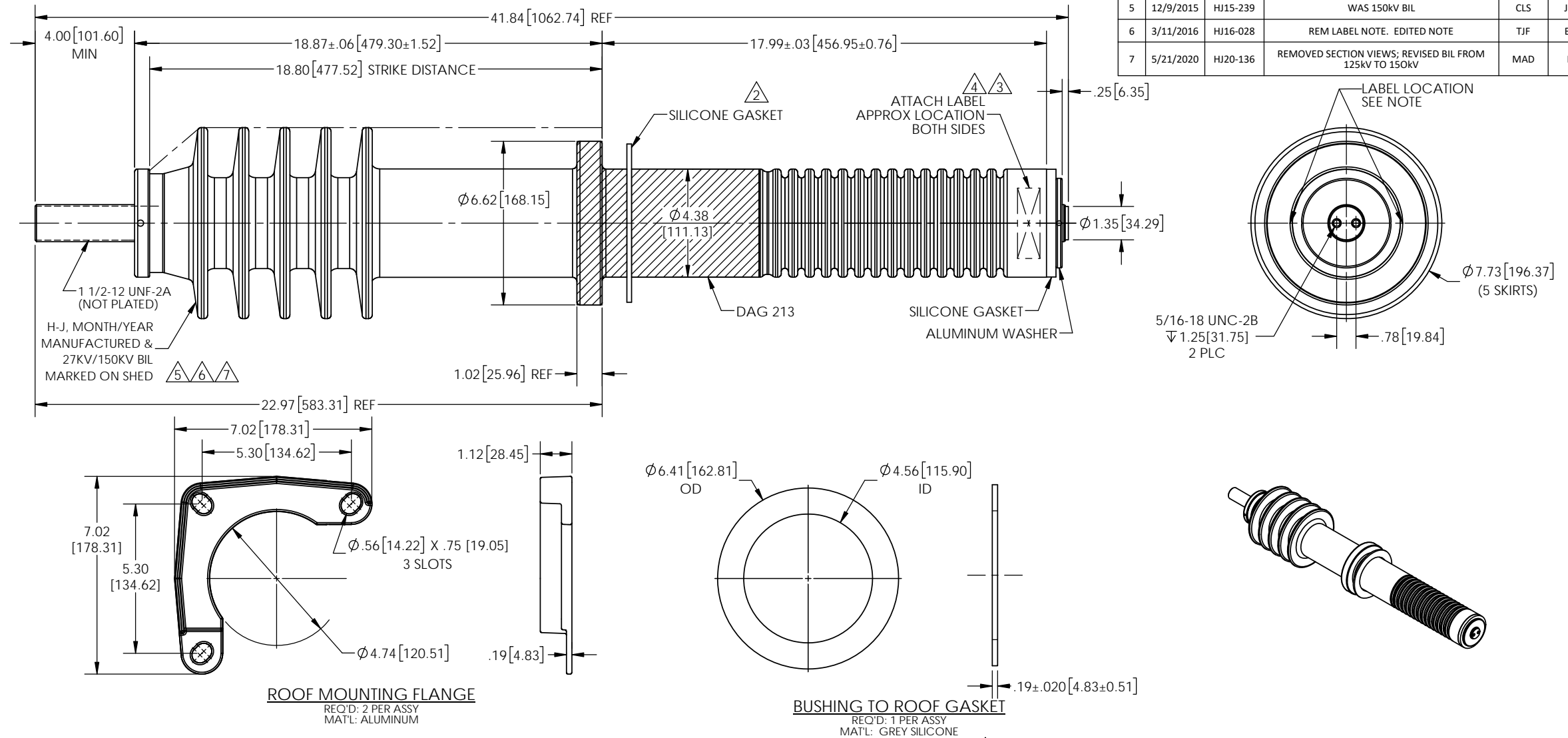


REVISIONS					
REV.	DATE	ECN #	DESCRIPTION	BY	APPD
1	4/5/13	PQI8024	REV NOTES 8 & 9, WAS 40 °C -TO- 50 °C WAS 15KV-TO-150KV	CJT	PM
2	10/6/2014	HJ14-209	STUD WAS TIN PLATED, SPECIFIED END AS "NOT PLATED", GASKET WAS BUNA N	CLS	JFS
3	5/6/2015	HJ15-097	CHG'D LABEL LOCATION	TJF	BLB
4	6/9/2015	HJ15-077	ADDED GASKET. ADDED LABEL NOTE	TJF	BLB
5	12/9/2015	HJ15-239	WAS 150KV BIL	CLS	JDD
6	3/11/2016	HJ16-028	REM LABEL NOTE. EDITED NOTE	TJF	BLB
7	5/21/2020	HJ20-136	REMOVED SECTION VIEWS; REVISED BIL FROM 125KV TO 150KV	MAD	LO



- PORCELAIN NOTES:**
1. WET PROCESS ELECTRICAL PORCELAIN.
 2. GRAY GLAZE MUNSELL 5BG 7.0/0.4
 3. TOLERANCE ±3% WITH NOTHING LESS THAN ±.03", UNLESS OTHERWISE NOTED ON THE DRAWINGS.
 4. 60HZ WITHSTAND: 60KV DRY
50KV WET
 5. MINIMUM CREEPAGE: 33.00" (TOP)
17.54" (BOTTOM)
 6. BOTTOM END OF STUD IS SILVER PLATED.

- SPECIFICATIONS:**
1. BUSHING ASSEMBLY ACCORDING TO IEC 60137
 2. MAXIMUM RATED VOLTAGE (Ur): 28.4kV
 3. RATED CURRENT (Ir): 1200A
 4. RATED SHORT-TIME CURRENT AND DURATION (Ith/tth): 30kA 1s
 5. RATED DYNAMIC CURRENT (Id): 75kA
 6. CANTILEVER TEST LOAD: 1250N
 7. CANTILEVER OPERATING LOAD: 625N
 8. LOW TEMPERATURE WITHSTAND: -50 C
 9. RATED LIGHTNING IMPULSE WITHSTAND VOLTAGE (Up): 150kV
 10. WEIGHT: 25.8KG

TOLERANCES (EXCEPT AS NOTED)	
DECIMAL	+/- .032"/.8mm
FRACTIONAL	+/-
ANGULAR	+/- 2 Degrees



H-J ENTERPRISES, INC.			
3010 HIGH RIDGE BLVD. HIGH RIDGE, MD. 63049 USA PHONE 1-636-677-3421 FAX 1-636-376-1915			
27KV BUSHING ASSEMBLY			
MATERIAL		SEE DRAWING	
CHK'D	CJT	APP'D	10/06/14
DRAWN BY		DATE	DRAWING NO.
BS		1-31-13	AS1814-001
SCALE		N.T.S.	

PROPRIETARY AND CONFIDENTIAL
THE INFORMATION CONTAINED IN THIS DRAWING IS THE SOLE PROPERTY OF H-J ENTERPRISES, INC. ANY REPRODUCTION IN PART OR AS A WHOLE WITHOUT THE WRITTEN PERMISSION OF H-J ENTERPRISES, INC. IS PROHIBITED.